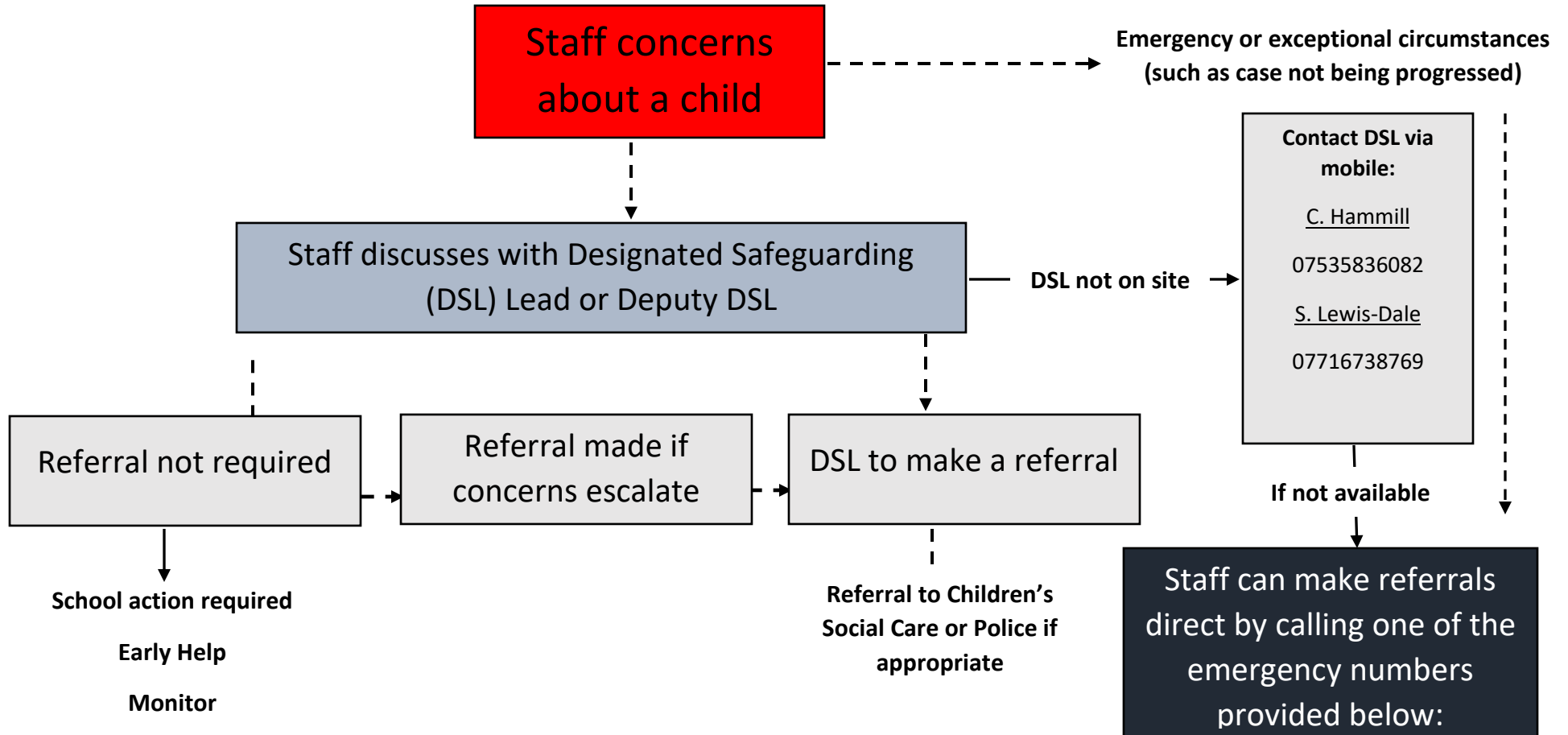


Actions when there are concerns about a child



- EMERGENCY:** If a child is in immediate danger call the **POLICE** on **999**
- EMERGENCY:** To make an **URGENT** referral call Children's Social Care on **0191 424 5010**
- EMERGENCY:** To make an **URGENT** referral call Children's Social Care **out of hours:** **0191 456 2093**
- Unsure how to respond or for **ADVICE** and guidance call a Clennell Education Solutions Safeguarding Consultant on **0191 214 6724**

Actions when there are concerns about a child

